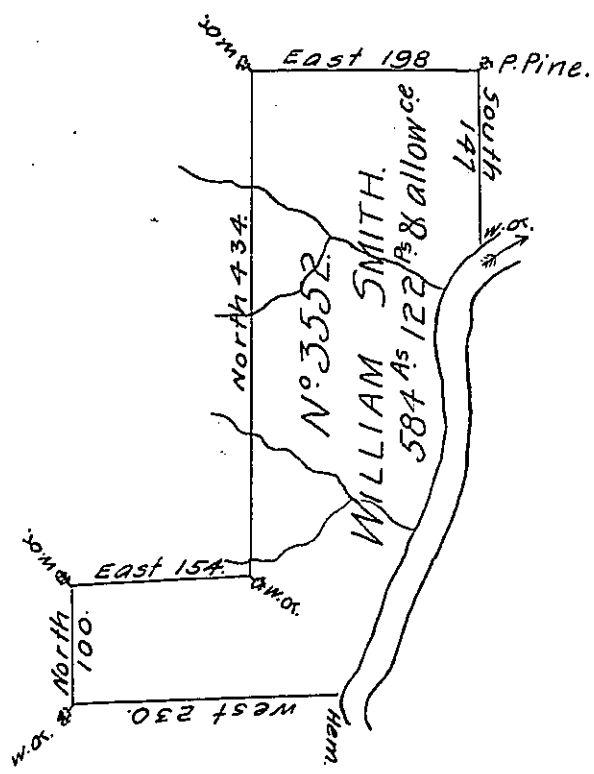


Dr Wm Smith



Course & Distance of N° 3552 from the W.O.C. Corner Up the river to the Hemlock.

- S. 45. W. 25.
- S. 18 W. 34.
- S. 1. E. 123
- S. 15. W. 46
- S. 27. W. 61
- S. 24. W. 125.

Surveyed November 2<sup>d</sup> 1807 the above tract of land for the Commonwealth & Charles Smith & others, on an Order of resurvey, on Warrant N° 3552, containing five hundred and eighty four Acres, and one hundred and twenty two Perches and allowance &c<sup>a</sup> Situate on the West side of the West branch of Susquehanna, late Purchase, Clearfield County.

Sam<sup>l</sup> Stewart, D.S.

To Sam<sup>l</sup> Cochran, Esquire, }  
 Surveyor General. }

Warrant dated 21<sup>st</sup> December 1792

IN TESTIMONY that the above is a copy of the original remaining on file in the Department of Internal Affairs of Pennsylvania, made conformably to an Act of Assembly approved the 16th day of February 1833, I have hereunto set my hand and caused the Seal of said Department to be affixed at Harrisburg, this twenty-sixth day of December 1906.

*Goach P. [Signature]*  
 Secretary of Internal Affairs.